

**NOCC'd up, NOCC'd down, NOCC'd out?**

**NOCC yet!**

**How is WA progressing? An introduction to the reporting module; and a taste of things to come.**



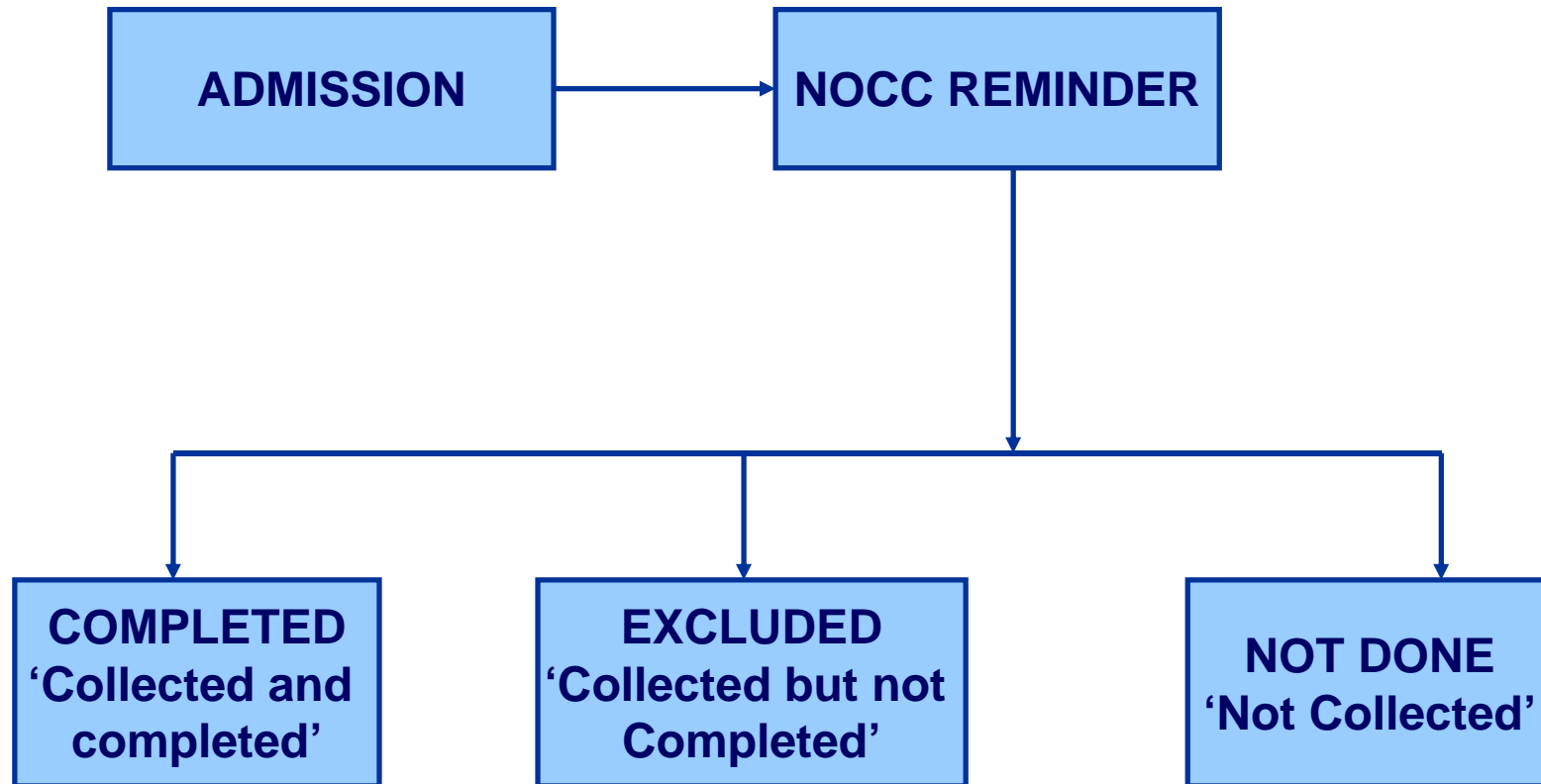
Department of Health  
Government of Western Australia  
Jonathon Little  
Office of Mental Health



# Today's presentation

- Discussion of collection and completion statistics
- Introduction to the Online reporting module
- Some future reports.

# Terminology – WA's lingo



# Terminology II – WA's lingo

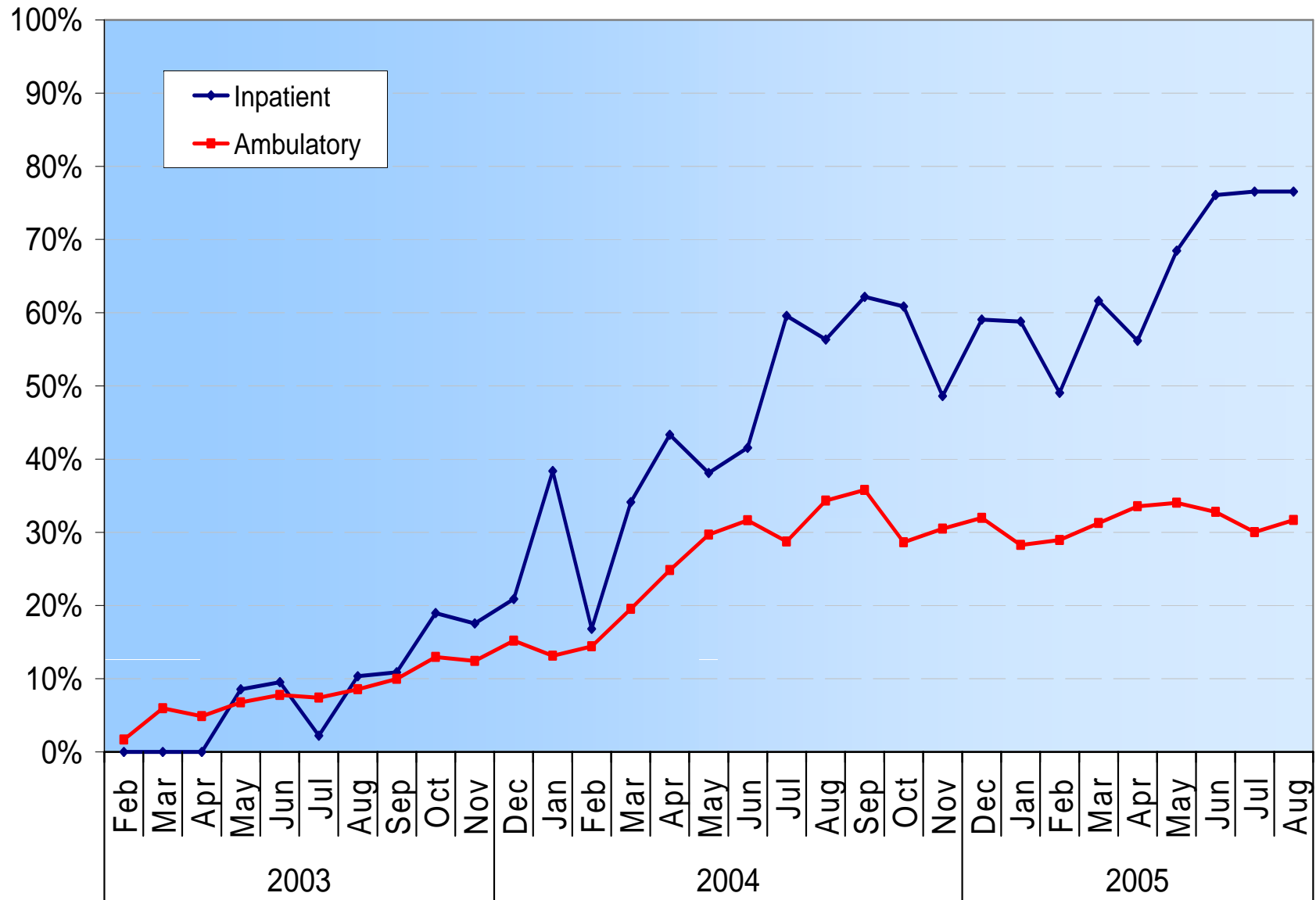
- Completion rate =

$$\frac{\text{Completed}}{\text{Completed} + \text{Excluded}} \times 100$$

- Collection and Completion rate =

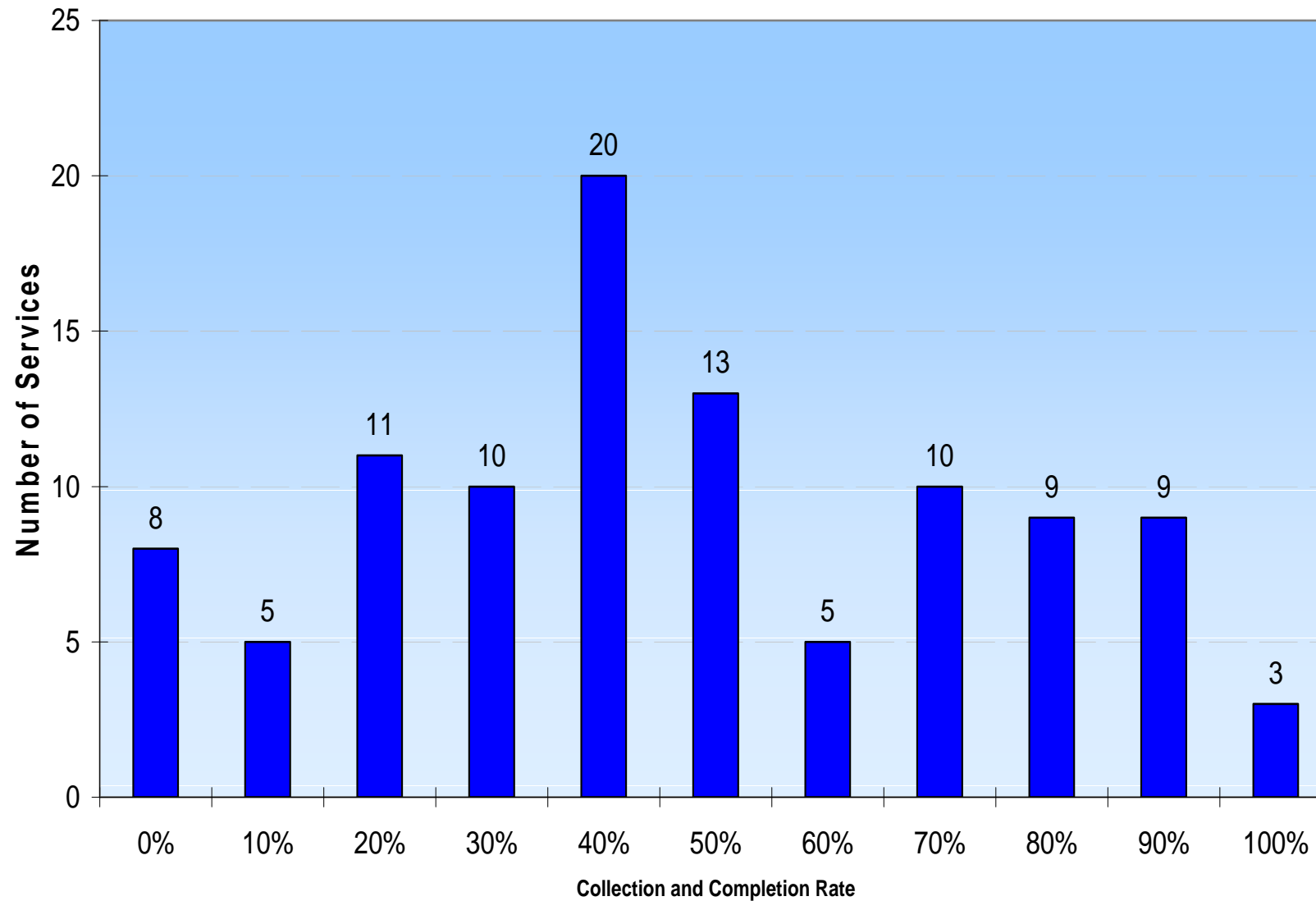
$$\frac{\text{Completed}}{\text{Completed} + \text{Excluded} + \text{Not Done}} \times 100$$

# Collection and Completion rates - WA time series



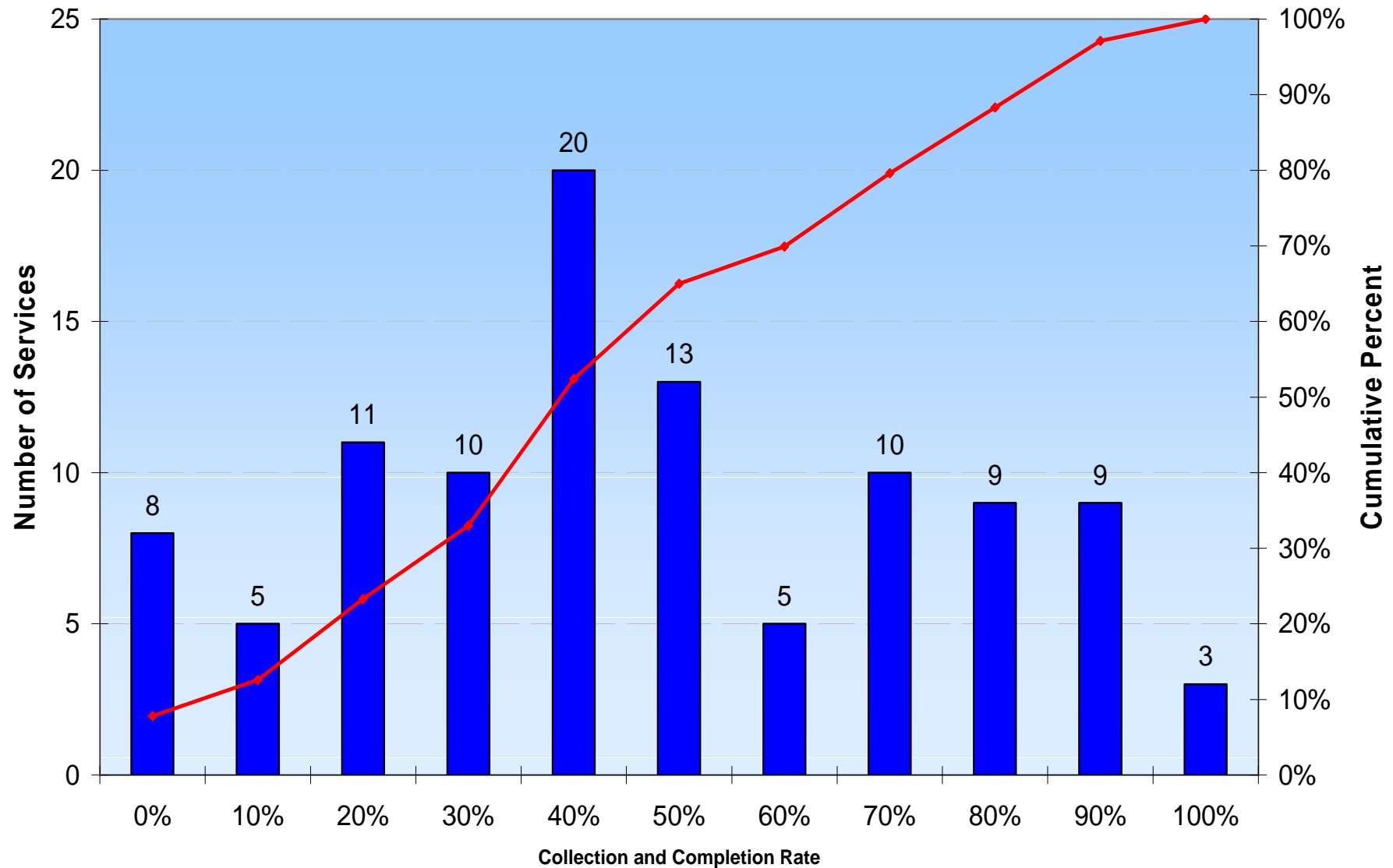
# Collection and Completion rate distribution

For collection occasion associated with admissions/activation between 01 April 2005 to 31 August 2005

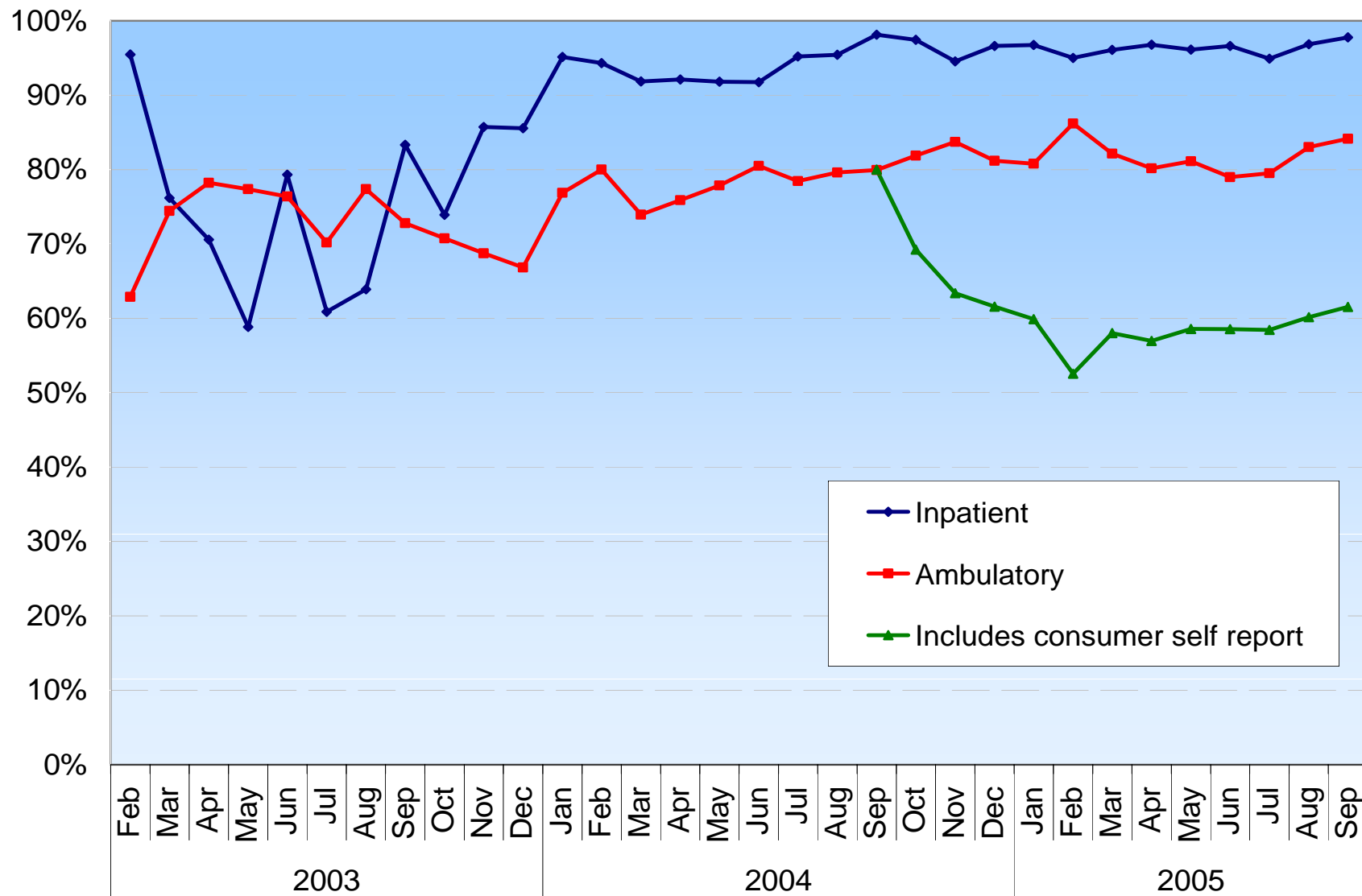


# Collection and Completion rate distribution

For collection occasion associated with admissions/activation between 01 April 2005 to 31 August 2005

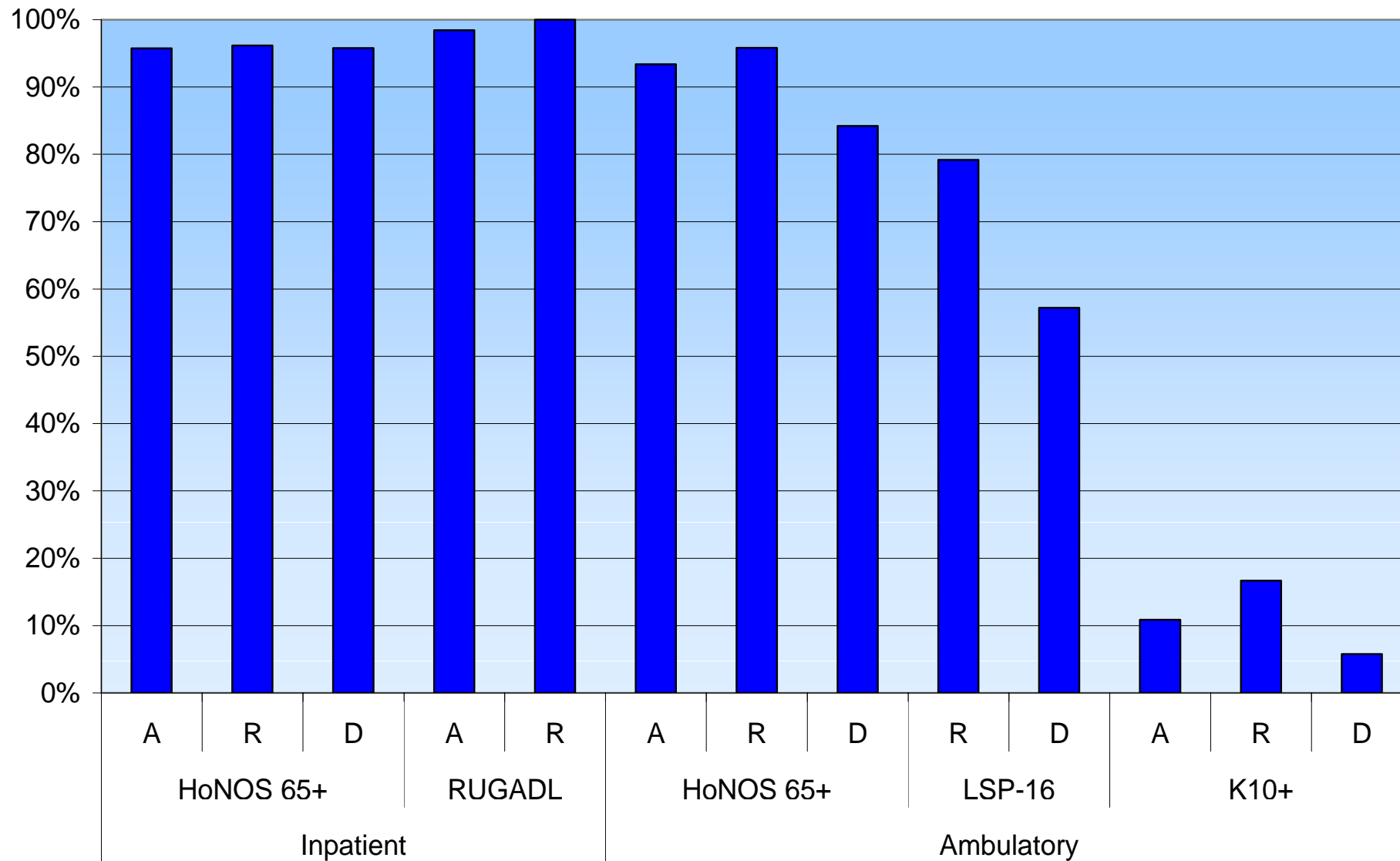


# Completion rates - WA time series



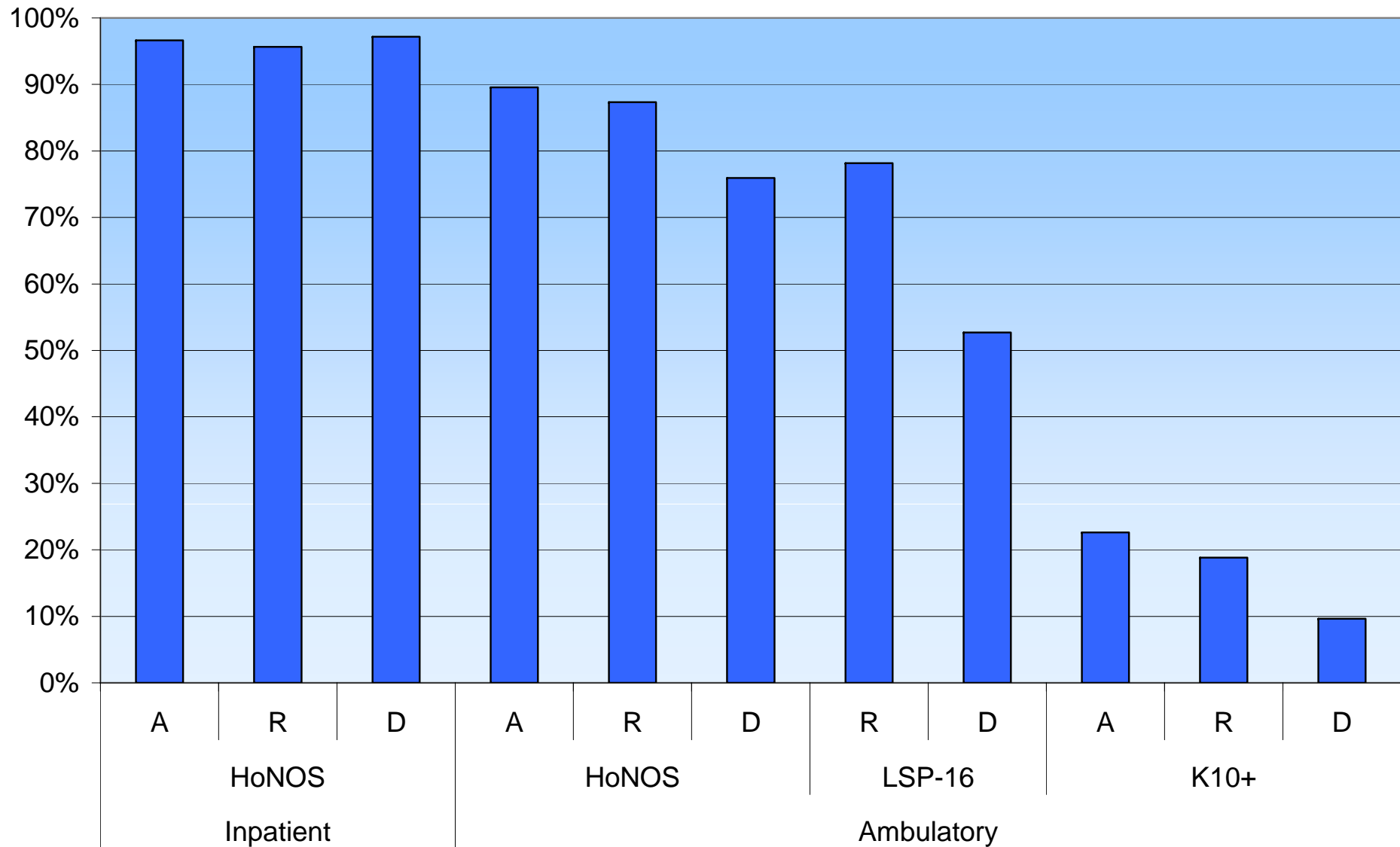
# Older Persons

For collection occasion associated with admissions/activations beginning between 01 April 2005 to 31 August 2005



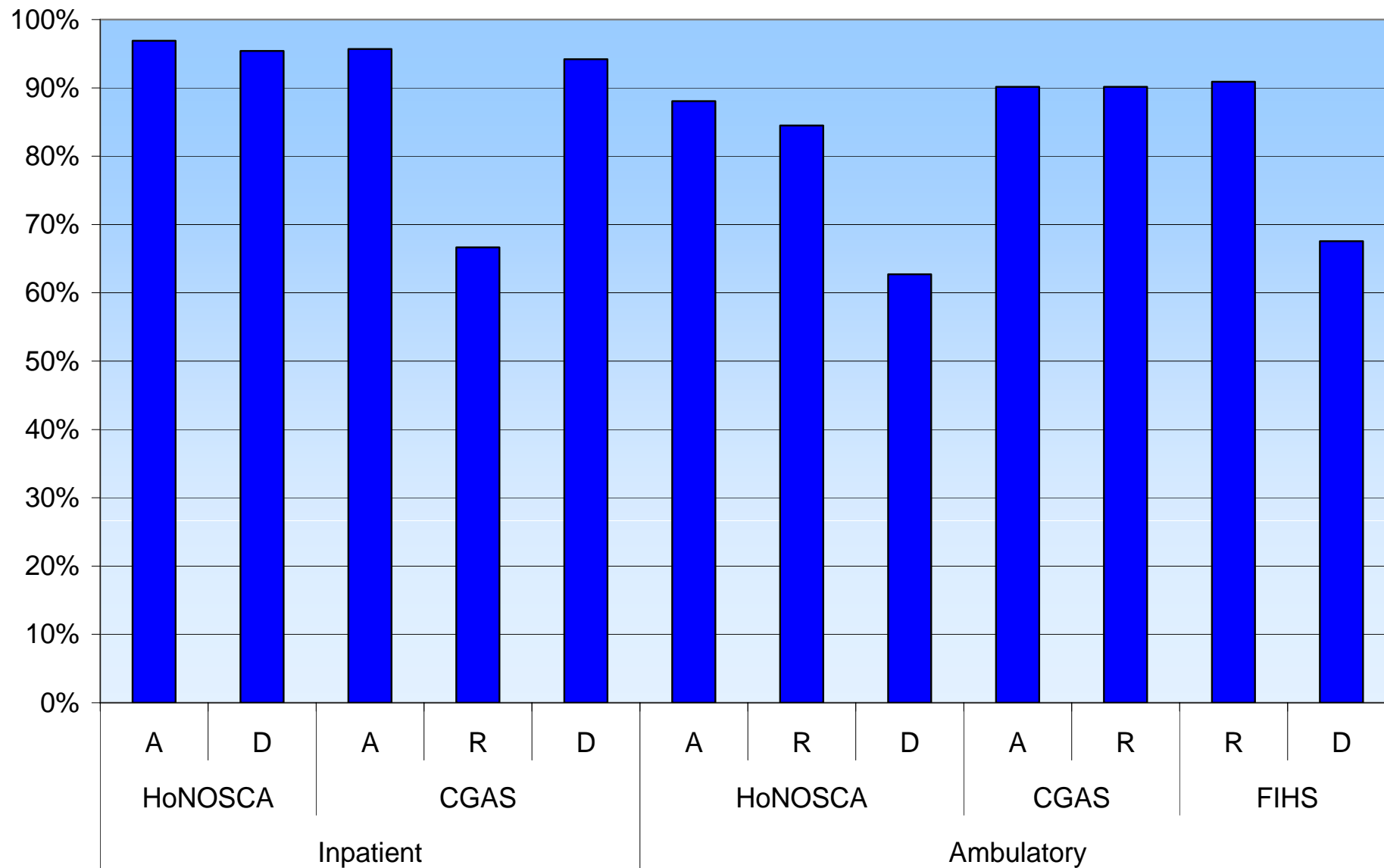
# ADULT

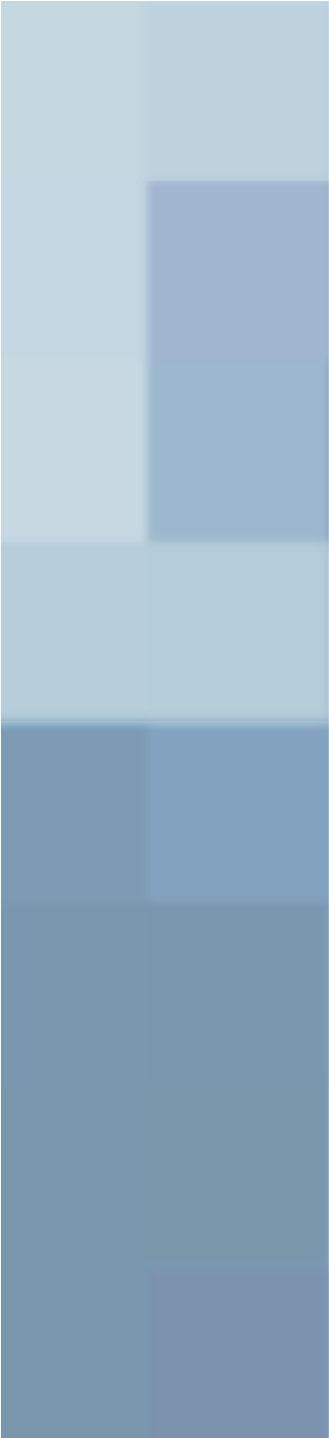
For collection occasion associated with admissions/activations beginning between 01 April 2005 to 31 August 2005



# CAMHS

For collection occasion associated with admissions/activations beginning between 01 April 2005 to 31 August 2005





# Why a MHIS Reporting Module

## Welcome to Phase One



# Why online reporting

- An interim measure until we have PSOLIS ad hoc reporting
- Overwhelming data volume
- Giving something back!
- Access is online and ~ real time (within 24 hrs)
- Compliment existing reports available from OMH and ICM (Information Collection and Management – previously HIC)
- Oracle Discover is the software that delivers the MHIS RM.
- Further reports and functionality will become available in future updates.
- An evolving process



# MHISRM in search of a name...

- MHIRMA
  - Mental Health Information Reporting Module with Attitude
- SOP
  - Son of PSOLIS
- NUMBAT
- Let us know your thoughts



# Two types of Oracle Workbooks

- Ambulatory Service Activity Reports
  - patient activity data.
- NOCC Collection and Completion Reports
  - Collection and completion rates plus instrument scores (HoNOS family only)



# Ambulatory Service Activity Reports

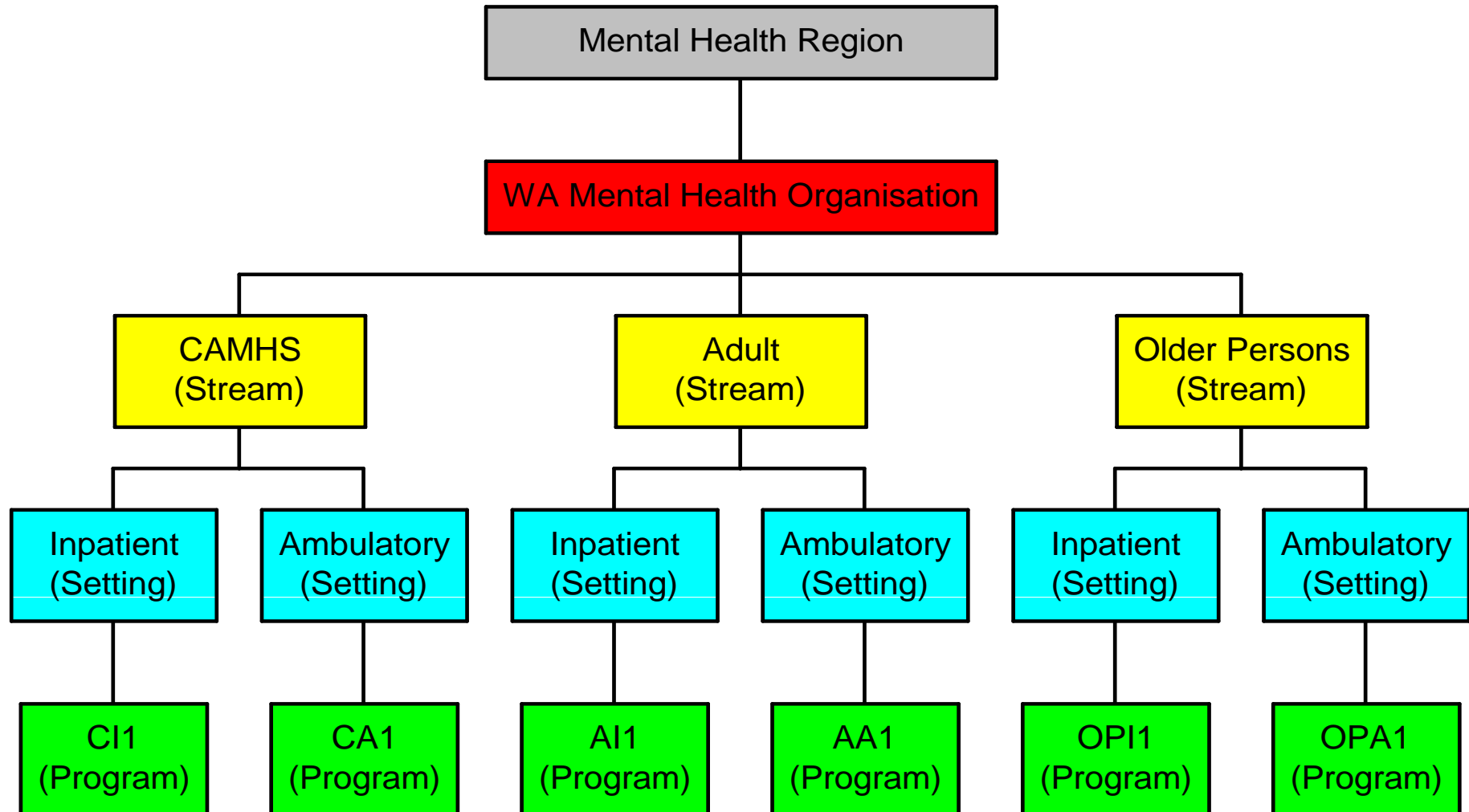
- Data is partitioned according to period
  - Annual
  - Quarterly
  - Monthly
  - Financial Annual
  - Financial Quarterly
  - Financial Monthly



# NOCC Workbooks

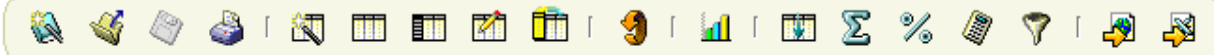
- NOCC collection status
- NOCC collection and completion status
- Summary of Focus of Care categories
- HoNOS family item Scores

# Levels of aggregation available





# Sample Oracle Workbooks



**NOCC Instrument Collection & Completion Rates by Stream Type**  
**From : '01-JAN-2005' To : '31-JAN-2005'**

Page Items: **As At: 28-SEP-2005** ▾

| Stream Type                  | Instrument  | Collection Occasion          | No. Collected & Completed | % Collected & Completed | No. Collected But Not Completed | % Collected But Not Completed | No. Not Collected | % Not Collected |
|------------------------------|-------------|------------------------------|---------------------------|-------------------------|---------------------------------|-------------------------------|-------------------|-----------------|
| ADULT                        | HoNOS       | 1) Inpatient ADMISSION       | 273                       | 70.18                   | 14                              | 3.60                          | 102               | 26.22           |
|                              |             | 2) Inpatient 3-month REVIEW  | 9                         | 15.79                   | 0                               | 0.00                          | 44                | 77.19           |
|                              |             | 3) Inpatient Ad-hoc REVIEW   | 6                         | 85.71                   | 0                               | 0.00                          | 0                 | 0.00            |
|                              |             | 4) Inpatient DISCHARGE       | 180                       | 38.88                   | 13                              | 2.81                          | 204               | 44.06           |
|                              |             | 5) Ambulatory ACTIVATION     | 300                       | 32.26                   | 107                             | 11.51                         | 434               | 46.67           |
|                              |             | 6) Ambulatory 3-month REVIEW | 736                       | 31.59                   | 67                              | 2.88                          | 1382              | 59.31           |
|                              |             | 7) Ambulatory Ad-hoc REVIEW  | 120                       | 62.18                   | 52                              | 26.94                         | 0                 | 0.00            |
|                              |             | 8) Ambulatory DEACTIVATION   | 179                       | 16.62                   | 118                             | 10.96                         | 719               | 66.76           |
|                              | Kessler 10+ | 2) Inpatient 3-month REVIEW  | 0                         | 0.00                    | 0                               | 0.00                          | 1                 | 100.00          |
| 5) Ambulatory ACTIVATION     | 52          | 5.59                         | 440                       | 47.31                   | 434                             | 46.67                         |                   |                 |
| 6) Ambulatory 3-month REVIEW | 132         | 5.67                         | 806                       | 34.59                   | 1382                            | 59.31                         |                   |                 |



# MHIS Reporting Module Welcome to Phase Two

# Draft Table - Oracle Phase 2

| HoNOS<br>Organisation Alpha<br>Adult Inpatients  | Admission Score |      | Discharge Score |     | Change Score |                       |                  | Effect Size |  |              |              |                           |
|--|-----------------|------|-----------------|-----|--------------|-----------------------|------------------|-------------|--|--------------|--------------|---------------------------|
|  | Valid Pairs     | M    | SD              | M   | SD           | Median length of stay | Raw Change Score | <i>p</i>    | Hedge's Unbiased Effect Size Estimator | Lower 80% CI | Upper 80% CI | HUEFS per 10 days of stay |
| Schizophrenia  | 26              | 16.7 | 10.1            | 9.7 | 5.5          | 13.0                  | 7.0              | 0.49        | 0.70                                   | 0.38         | 0.97         | 0.53                      |
| Manic episodes and bipolar affective disorders, current episode manic                                      | 13              | 14.8 | 8.4             | 8.3 | 5.6          | 9.0                   | 6.5              | 0.33        | 0.78                                   | -0.07        | 0.89         | 0.87                      |
| Depressive episodes; bipolar disorders, current episode depressed or mixed; recurrent depressive disorders | 26              | 14.0 | 6.1             | 7.0 | 5.1          | 8.5                   | 7.0              | 0.34        | 1.14                                   | 0.72         | 1.49         | 1.35                      |
| Emotionally unstable personality disorders (includes borderline & impulsive)                               | 12              | 17.9 | 5.6             | 6.8 | 4.6          | 9.0                   | 11.1             | 0.26        | 2.00                                   | 1.10         | 2.79         | 2.22                      |