

CNAHS
Northern Aged Assessment Care Co-ordination
Treatment Service

Use of Outcome Measures to inform every day
clinical practice and the recovery process.



Government
of South Australia

SA Health



HoNOS 65 + Health of the Nation Outcome Scale



CNAHS
Northern Aged Assessment Care Co-ordination Treatment Service

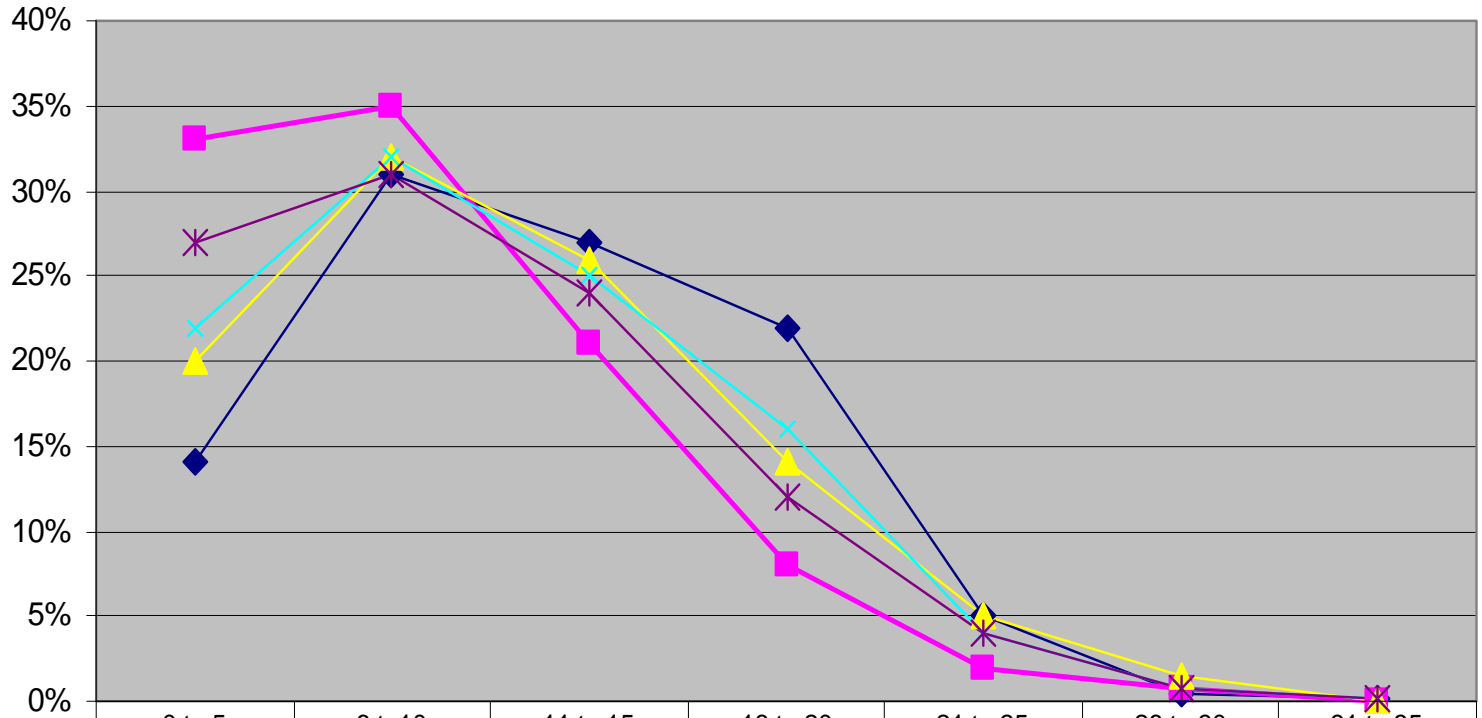
- > The Northern Aged ACCTS team exists to provide a high quality community based service for older clients who suffer from serious mental health problems.
- > The Multidisciplinary Team of a Psychiatrist and 12 staff, consists of (9) Mental Health Nurses, (2) Social Workers (1) Occupational Therapist
- > The catchment area of this service is the Northern suburbs of Adelaide.
- > According to the 2006 Australian Bureau of Statistics (ABS) Census there are **41700** persons who are 65 years old or over of which **10255** were over 80 years or over.
- > Planning SA (2007) projections indicate that between 2006 and 2011 there will be an additional **7500** residents living in the Northern region a disadvantaged region within the state (2001, IRS-ED-ABS) Index of relative Socio-Economic Disadvantage.



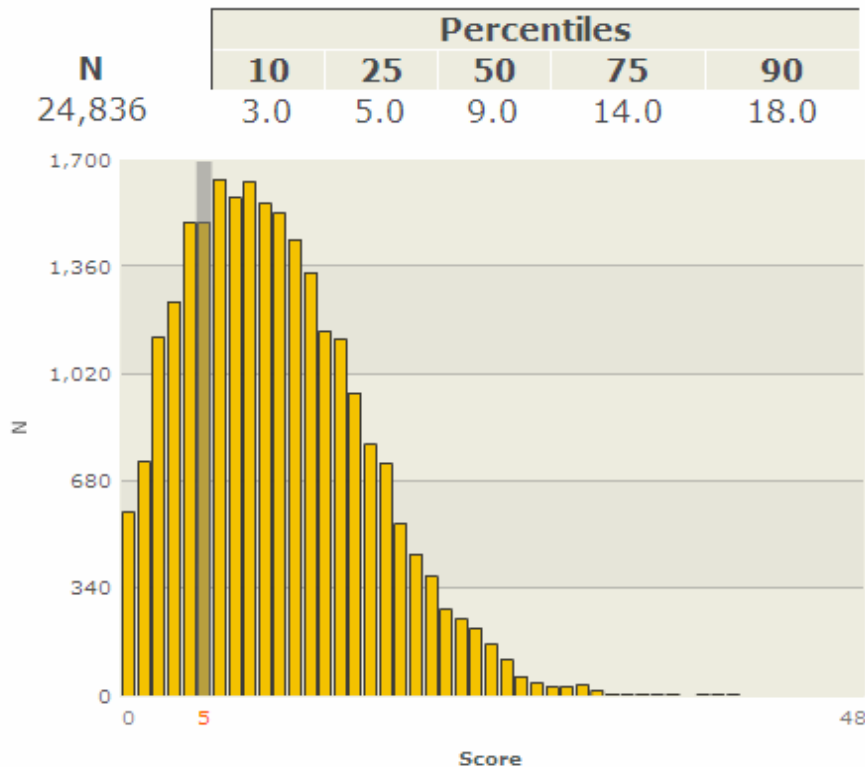
CNAHS
Northern Aged Assessment Care Co-ordination Treatment Service

- > An internal review of HoNOS 65+ data in a CNAHS, Northern Aged Community Mental Health Service revealed an anomaly in the rating clinicians recorded for elderly clients with a chronic Mental illness. Of concern was the total number of HoNOS 65+ scores of 0 across all sub scales and more generally total scores of less than 5.
- > The CNAHS Mental Health Research and Outcomes Unit, was engaged to review HoNOS 65+ data for Aged Mental Health clients in CNAHS and benchmark this against the National data set.
- > The data indicated that the clinician ratings for this Northern Aged Community Mental Health Team were incongruous with other Aged Mental Health Teams, locally and nationally.
- > The Northern Aged Community Mental Health multidisciplinary team engaged the CNAHS, Outcomes Coordinator to review the current Clinician Guide on Outcome Measures and conduct refresher training with staff on the HoNOS 65+ glossaries to address this issue.
- > The significance of HoNOS 65+ scores was reinforced to the clinicians, and how these scores should be reflected in the care planning needs of the clients.

Ambulatory Review HONOS 65+ Scores as Percentages Sept 07



◆ Glynde	14%	31%	27%	22%	5%	0.40%	0.20%
■ Nth. Aged Care	33%	35%	21%	8%	2%	0.70%	0%
▲ West Aged Care	20%	32%	26%	14%	5%	1.50%	0%
× Totals	22%	32%	25%	16%	4%	0.70%	0.10%
* National	27%	31%	24%	12%	4%	0.70%	0.10%



Jurisdiction: National

Age Group: Older Person

Age Range: 65 to 74, 75 to 84, 85+

Measure: HoNOS65+

View: Total Score

Level of Analysis: Collection Occasion

Occasion: Review

Individual Comparison Status Score: 5

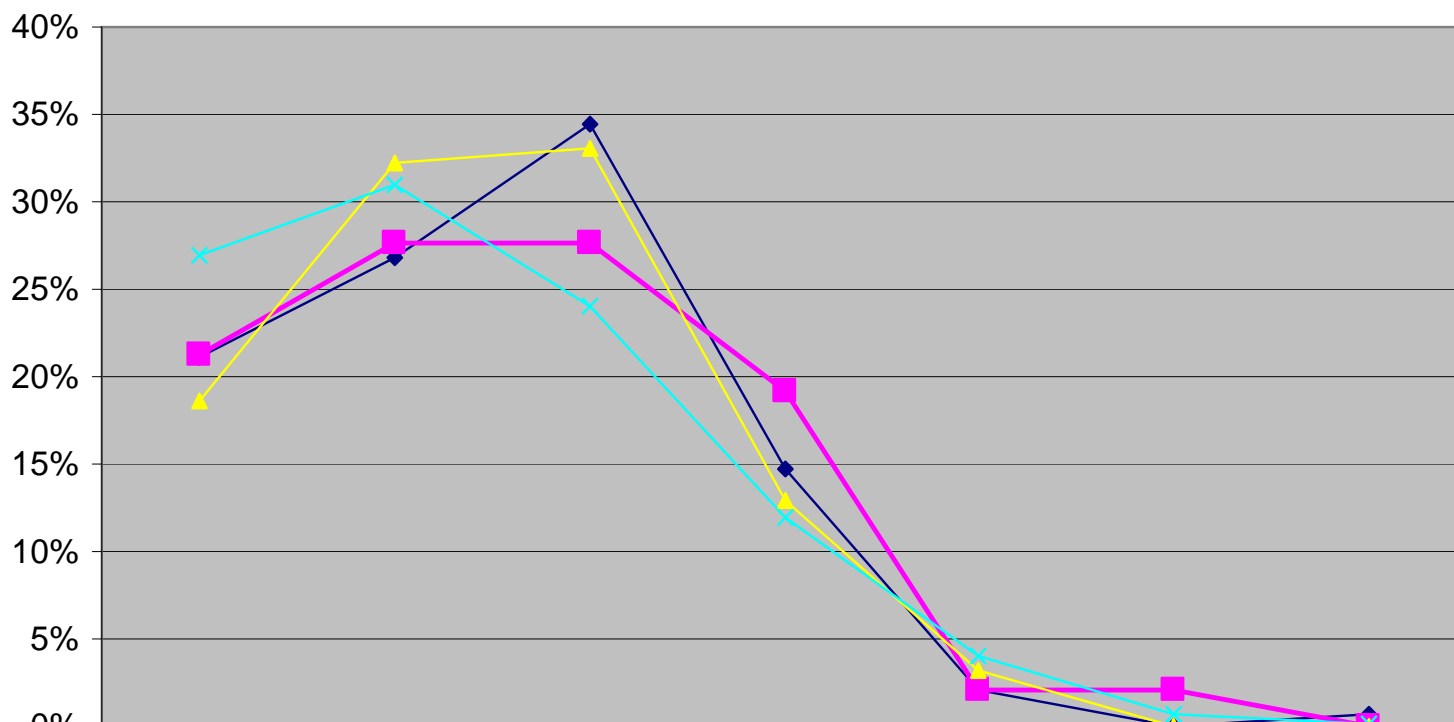
Service Setting: Ambulatory

Score: 5

Percentile: 27.0

27.0% of assessments for consumers at Review to Ambulatory care score 5 or less on the HoNOS65+ Total Score; 73.0% of assessments for consumers like this score more than 5 on the HoNOS65+ Total Score

Ambulatory Review HONOS 65+ as % Oct 07 to March 08



	0 to 5	6 to 10	11 to 15	16 to 20	21 to 25	26 to 30	31 to 35
◆ Glynde	21%	27%	35%	15%	2%	0%	1%
■ Nth. Aged Care	21%	28%	28%	19%	2%	2%	0%
▲ West Aged Care	19%	32%	33%	13%	3%	0%	0%
× National	27%	31%	24%	12%	4%	0.70%	0.10%

- **Summary**
- Being complacent and not referring to the glossaries resulted in poor data quality.
- Highlighted is the need for ongoing reinforcement and education in the use of HoNOS and its glossaries to maintain accurate quality data.
- Scores greater than 2 are clinically significant and should be reflected in the Care Plan.
- With the introduction of new Care Plans into CBIS it is essential data is accurate as the HoNOS and LSP will indicate the needs of consumers that will be reflected in the joint input by consumer / service provider into the CARE PLAN

> **HoNOS 65 +**

Sub Scales

Question

- 1
- 2
- 3
- 4
- 5
- 6
- 7
- 8
- 9
- 10
- 11
- 12

Behavioural

Impairment

Symptoms

Social

Environmental

Scores greater than 2 are clinically significant and should be reflected in the Care Plan.





Government of South Australia

SA Health