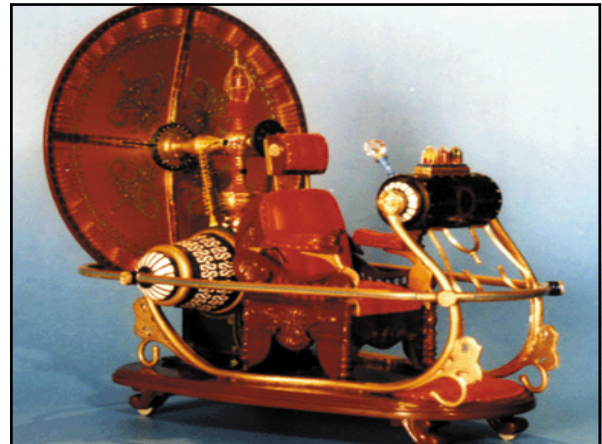


# Outcome Measures: Quantity or Quality?

2<sup>nd</sup> Australasian Mental Health Outcomes Conference  
Melbourne 24-26 November 2008

SYDNEY SOUTH WEST  
AREA HEALTH SERVICE  
NEWCASTLE HEALTH

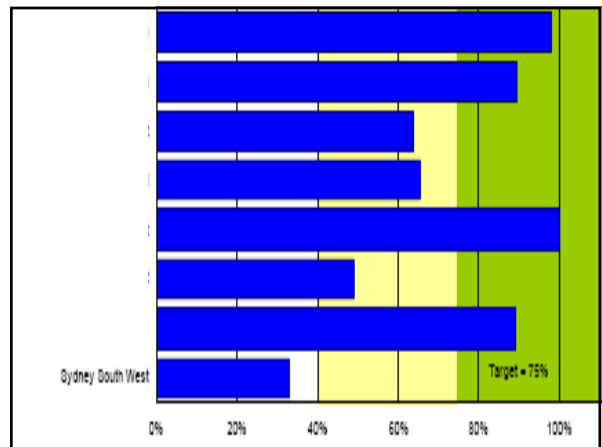
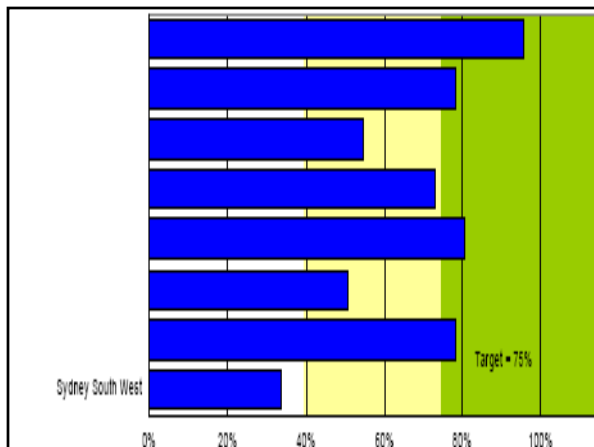
Rhian Davies, SW Cluster  
Outcomes and Assessment Manager

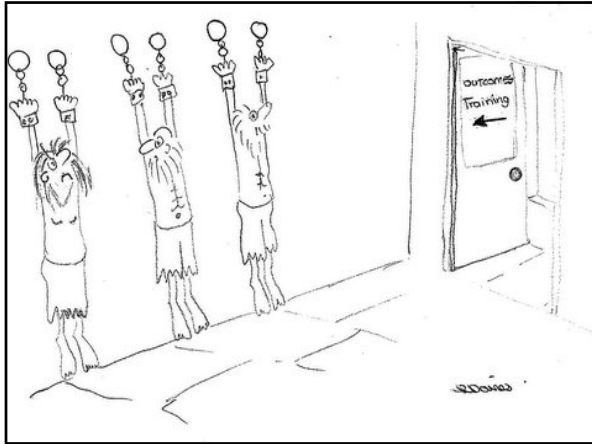


## School Report

### Physics

- Half term
  - 12%
  - "not interested"
- Full term
  - 11%
  - "just doesn't get it"





## Review of the data

Review the reports in Sci-MHOAT

- Clients currently in care
- Clients overdue for review
- Current case profiles by collection by service unit
- Current case profiles by collection by staff member

### Unit A Clients currently in Care

Sci	71	
Cerner	97	
Overdue	43	
Missing	26	107

### Unit B Clients currently in Care

Sci	233	
Cerner	286	
Overdue	155	
Missing	53	342

### Unit C Clients currently in Care

Sci	171	
Cerner	88	
Overdue	73	
Missing	83	266

### Community Rehab Step down program

Client A

- Over 1 year period
  - 25 occasions of service
  - 3 MH inpatient admissions
  - 3 ED presentations
  - 1 outcome measure on admission

## Community Rehab Step down program

### Client B

- 9 month period
  - 49 occasions of service
  - 3 MH inpatient admissions
  - 13 ED presentations
  - 1 outcome measure - review

## Unit A HoNOS Profile

% of clients with clinically significant score at HoNOS Items

	1	2	3	4	5	6	7	8	9	10	11	12
11	1	21	23	11	24	13	24	23	14	7	8	
12	12	22	6	10	78	40	74	36	16	6	9	

What is the service setting? Ambulatory Care

What service type? Early Psychosis Intervention

## Unit A Profile review

- Missing measures varied between 3 to 9
- 1 clinician had no clients with clinically significant items
- 4 clinicians had no clients with clinically significant problems for item 6
- 1 staff member had all clients overdue for review by at least 3 months
- 1 staff member was up to date with measures

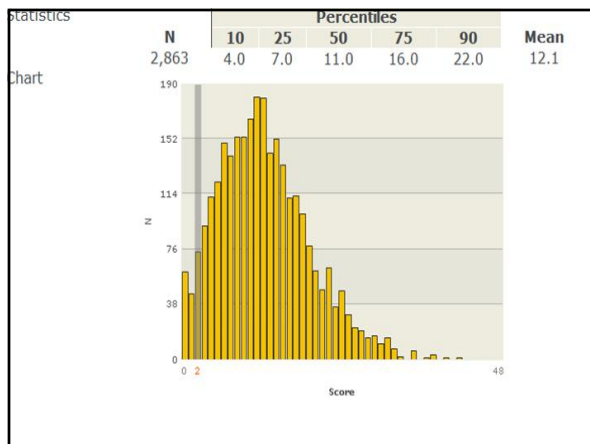
## Client A

### Time 1

- HoNOS 3

### Time 2

- HoNOS 2



## Client B

### Time 1

- HoNOS 3

### Time 2

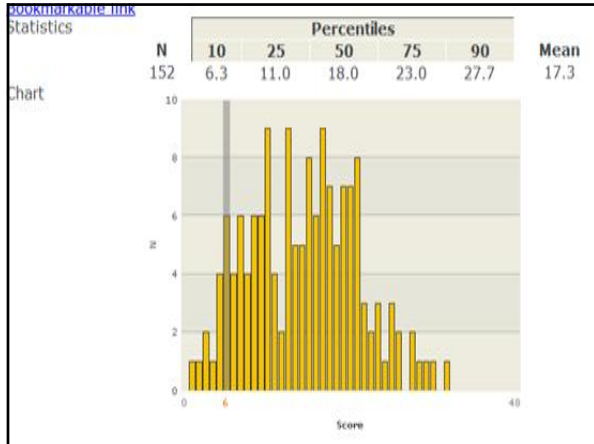
- HoNOS 2

### Time 3

- HoNOS 4

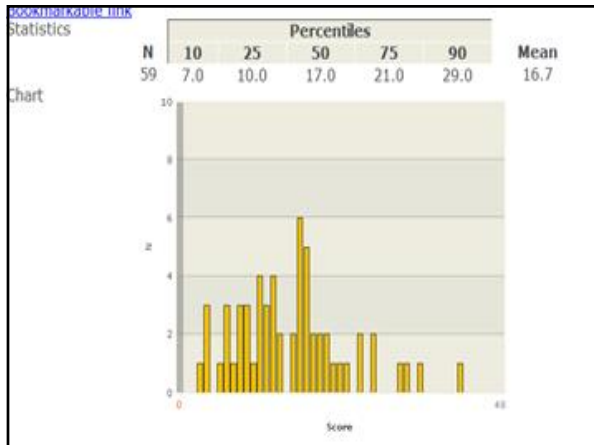
### Time 4

- HoNOS 2



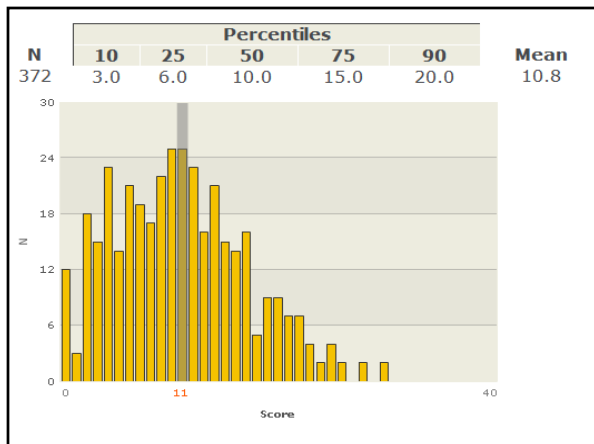
### Client C

- Time 1
  - HoNOS not collected
- Time 2
  - HoNOS Unable to rate
- Time 3
  - HoNOS 0
- Time 4
  - HoNOS 0



### Client D

- Time 1
  - HoNOS unable to rate
- Time 2
  - HoNOS 15
- Time 3
  - HoNOS 11



### HoNOS Profile

% of clients with clinically significant score at HoNOS Items

Item	1	2	3	4	5	6	7	8	9	10	11	12
%	12	12	6	2	2	6	12	12	12	8	75	80

What setting? **Inpatient**

What service unit? **High Dependency Unit**

## HDU HoNOS Profile

% of clients with clinically significant score at HoNOS Items											
1	2	3	4	5	6	7	8	9	10	11	12
75	24	49	46	12	72	33	60	51	31	23	31

Time 2

## Comparison HoNOS Profile

% of clients with clinically significant score at HoNOS Items

1	2	3	4	5	6	7	8	9	10	11	12
12	12	6	2	2	6	12	12	12	8	75	80
75	24	49	46	12	72	33	60	51	31	23	31

Time 1 and Time 2

What happened between time 1 and time 2?

## Newton's first law of physics

An object in motion with the same direction and speed tends to stay in motion with the same speed and in the same direction.

unless acted upon by an unbalanced force.

